

Installation

Requirements

- [Universal Fighting Engine](#) (PRO or Source)
 - Understanding of U.F.E tools
 - Unity 4.5 or higher
 - Know your way around the basic tools and terminology from Unity
-

Package

If acquired from Unity's Asset Store:

- Go to Window > Asset Store > Downloaded Assets
- Select *Fuzzy AI for UFE* and click on the Import/Update button.

If acquired from other stores:

- Double click the unitypackage file or
 - Go to Main Menu > Assets > Import Package > Custom Package
 - Browse to the location of the downloaded unitypackage and open it.
-

Starting Fuzzy AI

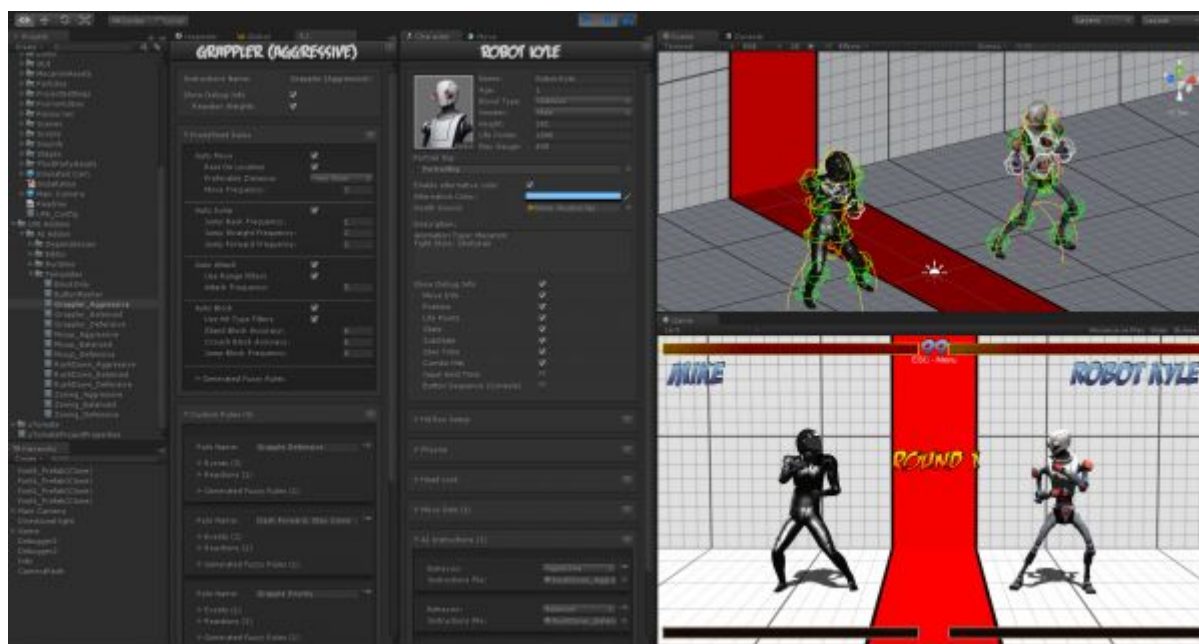
If you decide to start a new scene, skip to *Starting a new scene*. As soon as you import Fuzzy AI onto UFE you will be able to see the following new options:

- Under [Global Editor](#), [AI Options](#) -> [AI Engine: Fuzzy AI](#)
- Under [Character Editor](#), [AI Instructions](#)
- Under [Move Editor](#), [AI Definitions](#)
- New Editor: [A.I. Editor](#) (under Window → U.F.E.)

Notes:

- [Global Editor](#) -> [AI Options](#) will now have Fuzzy AI options enabled. Use it to create different difficulty settings. If you are using the UFE_Config.asset file that comes with UFE, you should now see 3 new predefined difficulty settings already assigned by default.
- Before being able to see it in action you need to assign a few instruction files to your characters. Each of the demo characters should now appear with 3 empty [A.I. Instruction](#) slots each.
- Feel free to choose any of the fighting templates from the folder UFE Addons\AI Addon\Templates. This is my recommendation:
 - *Mike*: Mix-up set (Mixup_Aggressive, Mixup_Balanced, Mixup_Defensive)

- *Robot Kype*: Rush down set (RushDown_Aggressive, RushDown_Balanced, RushDown_Defensive)
- *Mecanim Bot | Joan*: Rush down set (RushDown_Aggressive, RushDown_Balanced, RushDown_Defensive)



Updates

When updating UFE to a new version, if you don't want to move your work to a new project, you can follow these procedures:

Remember to always backup projects before importing a new update!

- Close Unity.
- Replace the files under `.\UFE Addons\AI Addon\Runtime\` and `.\UFE Addons\AI Addon\Editor\` with the files from the new version of Fuzzy AI.

[< Back to Universal Fighting Engine - Fuzzy AI](#)

From:
<http://www.ufe3d.com/> - **Universal Fighting Engine**

Permanent link:
<http://www.ufe3d.com/doku.php/ai:installation?rev=1414356611>

Last update: **2014/10/26 16:50**

