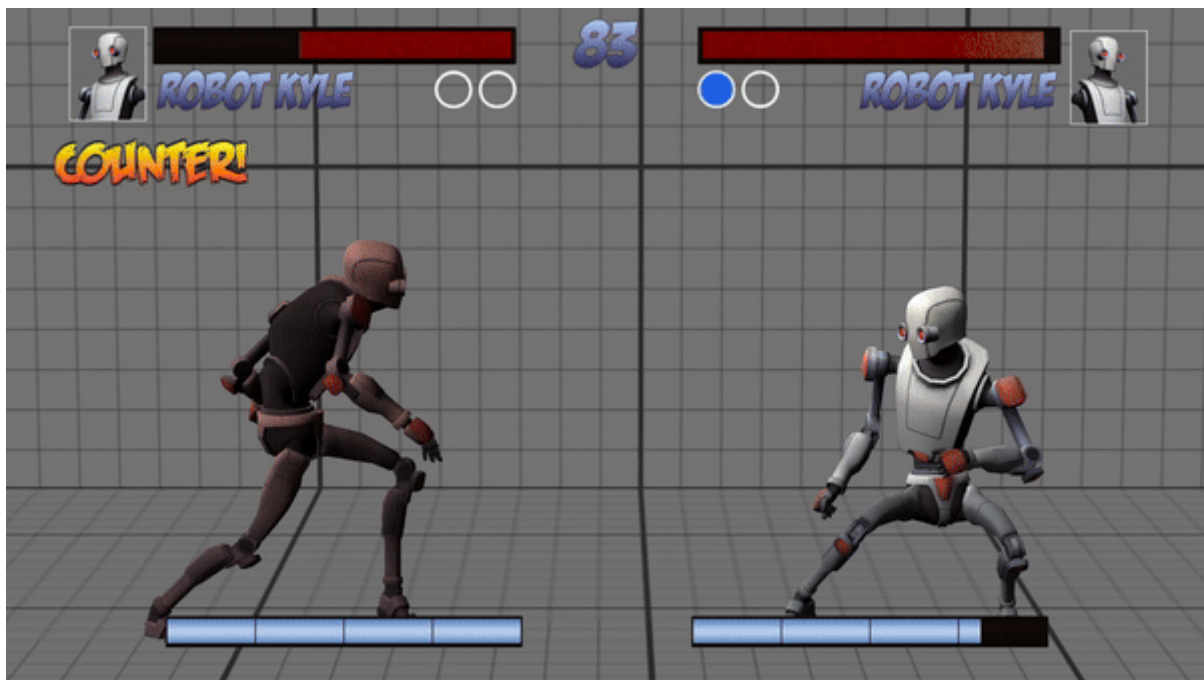


# Play Demo

Test a demo of UFE here.

Choose below which gameplay you'd like to try.

## 2D/2.5D Fighter



- [Windows](#)
- [WebGL](#)
- [Android](#)

## 3D Fighter

- [Windows](#)
- [WebGL](#)
- [Android](#)

## 3D Fighter (3rd person)

- [Windows](#)
- [WebGL](#)
- [Android](#)

## 3D Arena

- [Windows](#)
  - [WebGL](#)
  - [Android](#)
- 

# Controls

## Player 1 Controls

- Move, crouch, jump: W, A, S, D
- Light Punch / Select: T
- Medium Punch: Y
- Heavy Punch: U
- Light Kick / Back: H
- Medium Kick: H
- Heavy Kick: J

## Player 2 Controls

- Move, crouch, jump: Arrow Keys
  - Light Punch / Select: Insert
  - Medium Punch: Home
  - Heavy Punch: Page Up
  - Light Kick / Back: Delete
  - Medium Kick: End
  - Heavy Kick: Page Down
- 

# Special Attacks

Mike

Remarks:

- Legacy Animations
- Shotokan like character

Fireball - Down, Forward, Punch (Any)

Dragon Punch - Forward, Down, Forward, Punch (Any)

Shinku Hadouken - Down, Forward, Down, Forward, Light Punch (2 meters)

Metsu Shoryuken - Down, Forward, Down, Forward, Medium Punch (2 meters)

Shinryuken - Down, Forward, Down, Forward Heavy Punch (4 meters)

Shouryuu-Reppa - Down, Forward, Down, Forward Heavy Kick (4 meters)

Cool Combos:

1 - Light Punch, Light Kick, Medium Kick, Heavy Kick

2 - Heavy Punch, Heavy Dragon Punch

3 - Crouching Light Punch, Crouching Light Kick, Crouching Medium Punch, Crouching Medium Kick, Crouching Heavy Kick

4 - Crouching Light Punch, Crouching Light Kick, Crouching Medium Punch, Crouching Medium Kick, Crouching Heavy Punch

5 - (Corner) Jump Medium Kick, Crouching Medium Punch, Crouching Heavy Punch, Shinryuken, Heavy Dragon Punch, Metsu Shoryuken

6 - (Mid Screen) Crouching Heavy Punch, Shinku Hadouken x 2, Dash, Heavy Dragon Punch, (Corner) Metsu Shoryuken

Robot Kyle

Remarks:

- Mecanim Animations

- Marvel games inspired air combos

Fireball - Back (charge), Forward, Punch (Any)

Power Punch - Down, Forward, Weak + Heavy Punch (4 meters)

Wall Launcher - Forward + Heavy Punch

Throw - Button 3

Focus Attack - Heavy Kick (hold and release for higher damage. Hold all the way for an unblockable attack)

Cool Combos:

1 - Crouching Light Punch, Crouching Light Kick, Crouching Heavy Punch, Crouching Heavy Kick

2 - Light Punch, Light Kick, Heavy Punch, Heavy Kick, (Auto-Jump), Light Kick, Heavy Kick, Heavy Punch

3 - Light Punch, Light Kick, Heavy Punch, Wall Launcher, Heavy Kick, (Auto-Jump), Light Kick, Heavy Kick, Heavy Punch

4 - (from combo 2/3) Heavy Kick, (Auto-Jump), Heavy Kick, Heavy Punch, (Land) Power Punch

Mecanim Bot

Remarks:

- Mecanim Animations

- Chun-Li inspired move set

Hyakuretsukyaku - Light Kick (x3)

HouyokuSen - Back (charge), Forward, Back, Forward, Heavy Kick (4 meters)

Throw - Light Punch + Light Kick

Cool Combos:

1 - Light Punch, Light Kick, Medium Punch, Medium Kick, Heavy Kick

2 - Heavy Kick, Hyakuretsukyaku

3 - (Air) Heavy Kick, (Ground) Medium Kick, Hyakuretsukyaku (x2), HouyokuSen, Dash, Medium Kick

Ethan

Remarks:

- Mecanim Animations
- Fei-Long mix inspired move set
- Rekka - Down, Forward, Punch (3 times)
- Butterfly Kick - Forward, Down, Forward, Kick
- Power Up - Punch + Kick (4 meters)
- Assist - Button 4 (Gains Pow meter)
- Special Assist Super - Down, Forward, Button 4 (Pow Bar full)

And much more...

From:

<http://www.ufe3d.com/> - **Universal Fighting Engine**

Permanent link:

<http://www.ufe3d.com/doku.php/download?rev=1704359982>

Last update: **2024/01/04 04:19**

