

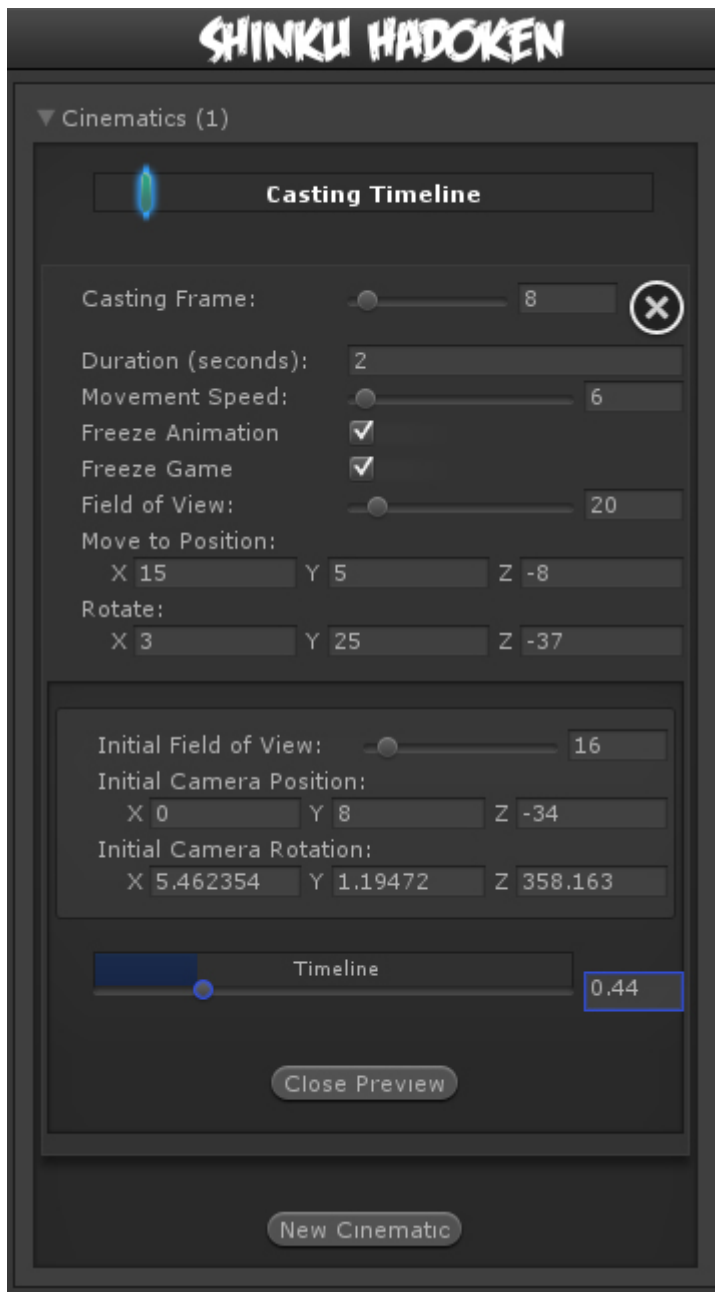
# Cinematics

*Cinematic Moves* in a 2.5D fighting game was first introduced in 2008 with the Street Fighter 4 series. It refers to taking advantage of the 3D engine by moving the camera to different angles during a move for dramatic camera shot. This feature is only available in the **PRO** and **SOURCE** versions of UFE.



UFE currently offers this option as a pre-hit cinematic. Soon more options will be added to this feature including hit confirms and grappling.

**Casting Frame:** When during the move the cinematic should begin.



**Duration (seconds):** How long should the the camera control be on screen before returning to normal state.

**Animation Speed:** Slow down or stop the animation from playing during cinematics. Other move options will not trigger if the cast frame plays while in cinematic mode.

**Freeze Game:** Toggle rather or not you want the entire game to freeze during cinematic. Even though the game “freezes”, UFE is configured to have all animations still move in a very slow speed (.005 of regular speed) during cinematic to create a dramatic effect. This can be changed in `./Scripts/ControlsScript.cs` (Pro Source Only)

The options below refer to where and how you want your camera to end its move. A Key frame, if you will.

**Field of View:** The target field of view.

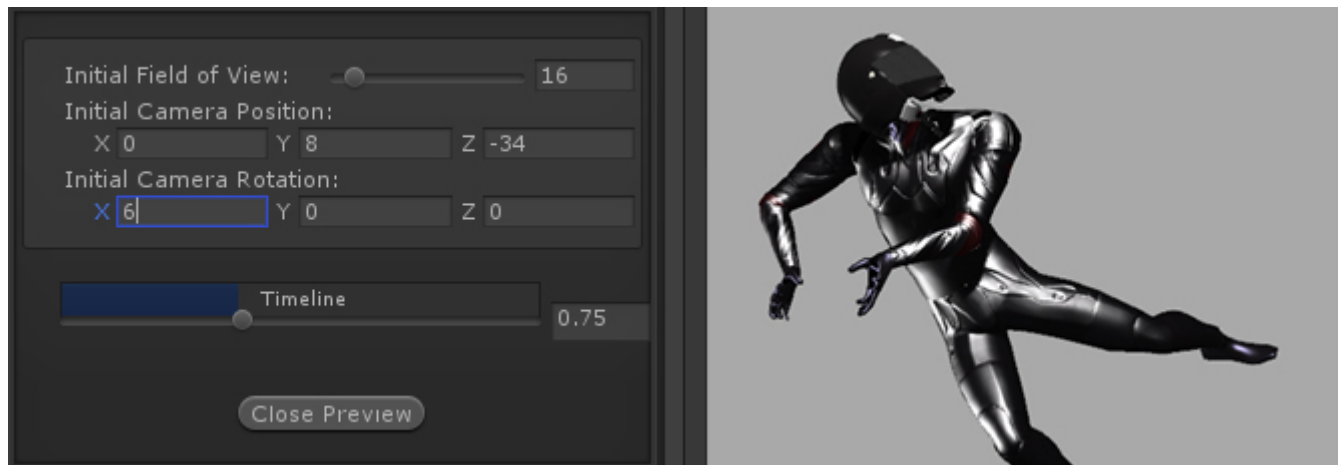
**Move to Position:** The target position (relative).

**Rotate:** The target rotation.

---

## Camera Preview

Preview your cinematics before testing.



**Initial Field of View:** An emulated version of your camera's standard field of view. In this demo the initial field is set to 16.

**Initial Camera Position:** The initial camera position of your emulated camera.

**Initial Camera Rotation:** The initial camera rotation of your emulated camera.

**Timeline:** Use the slider to preview the camera. The timer is based on the duration set.

**Snap Current Camera Info:** Snaps the current camera transform into the *Move to Position* and *Rotate* values. The position converted is related to the character through a [transform point](#).

### Notes:

- If you want the camera do cuts or camera shots, change the speed to 100.
- Multiple camera shots are possible, but they are a little tricky since the camera works in seconds while the animation works in frames. If you are working at 60 FPS, just remember that 60 frames = 1 second.
- To have your camera freeze after performing its move, make sure you set the speed to a value in which it will reach its destination with time to spare.

---

Code example:

```
void OnHit(HitBox strokeHitBox, MoveInfo move, CharacterInfo hitter){
    foreach(CameraMovement cameraMovement in move.cameraMovements){
        if (cameraMovement.casted) Debug.Log("Cinematic has been cast.");
    }
}
```

}

[< Back to Move Editor](#)

From:

<http://www.ufe3d.com/> - **Universal Fighting Engine**

Permanent link:

<http://www.ufe3d.com/doku.php/move:cinematics?rev=1395131871>

Last update: **2014/03/18 04:37**

